



## SOLVING NON-STANDARD TEST CHART USING THE FUNCTION

Avezov Alijon Khairulloyevich

Senior teacher of the Department of Mathematical Analysis of

Bukhara State University

[a.x.avezov@buxdu.uz](mailto:a.x.avezov@buxdu.uz)

Toshpo'latova Shahzodabonu Voxid qizi

Student of the direction of mathematics education of

Bukhara State University

**Annotation:** In this article, methods of solving parametric equations and non-standard tests using graphs of elementary functions, which are easily understood by students and lead to solutions in a short time, and examples that are very complex and long to be solved analytically, very easy methods of solving using graphs of elementary functions are presented with the help of examples.

**Key words:** equation, non-standard equations, function graph, inequality, system of equations, test, equation solution, coordinate system, even function, odd function, whole solution, method of integration by pieces, graphic method, integral.

Equations that are sharply different in appearance from the usual ones, as well as equations that are similar in appearance to the usual ones, but cannot be resolved by the usual methods (for example: with  $x^4 + \cos x^7 = 1$ ) also occurs. Such equations are non-standard equations as are referred to.

Non-standard equation of the balance of much general method available is not. The same reason for such equations, solving the function from the graph, different from the texture, from the disparity and so on from around the world use on comes. Us to the following theorem so the equation and solving it is worth [1-10].



**Theorem:** You a real number for any M in the collection  $f(x) \geq a, g(x) \leq a$  reasonable disparity, then in the collection M  $f(x) = g(x)$  equation

$$\begin{cases} f(x) = a \\ g(x) = a \end{cases}$$

Equations of the system are equally strong.

**From the test samples**

**1-Example.** This  $2^{|x|} = \cos x$  equation solution, which is in the answer given?

A)  $x = 0$  B)  $x = \pi$  C)  $x = \emptyset$  D) will not be detected.

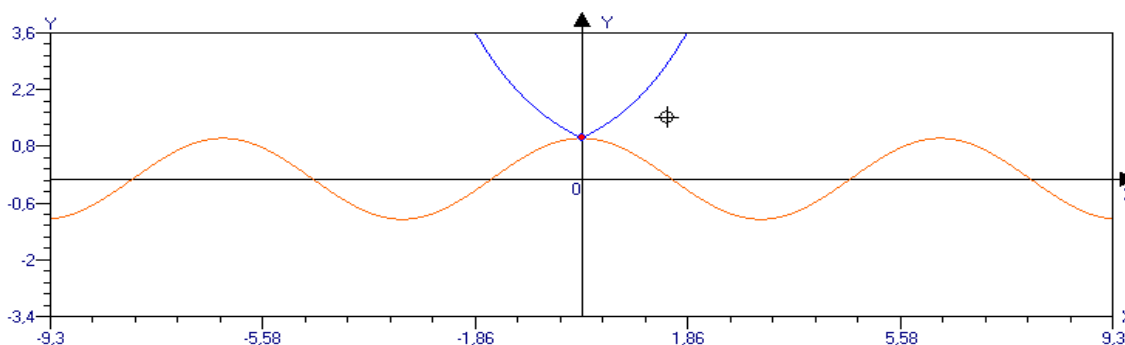
*Of charging.* I method: according to the high theorem  $f(x) = 2^{|x|}, g(x) = \cos x$  is. Also

$$\begin{cases} f(x) \geq 1 \\ g(x) \leq 1 \end{cases} \cup [f(x) = g(x)] \Rightarrow \begin{cases} f(x) = 1 \\ g(x) = 1 \end{cases} \Rightarrow \begin{cases} 2^{|x|} = 1 \\ \cos x = 1 \end{cases}$$

$$\Rightarrow \begin{cases} |x| = 0 \text{ and} \\ x = 2 \text{ are easily mobile application, } k \in Z \end{cases} \Rightarrow \begin{cases} x = 0 \\ x = 0, k = 0 \end{cases}$$

the equation solution  $x = 0$  . It is Answer: A).

II method: the equation 2 units to function, we will allocate.  $y_1 = 2^{|x|}, y_2 = \cos x$  . This is  $y_1$  and  $y_2$  the graph of the function of one coordinate system we retire (1-graph).



1-graph.  $y_1 = 2^{|x|}, y_2 = \cos x$ .



One-from the graph that are seen as the name suggests,  $y_1$  and  $y_2$  the function  $x = 0$  at the point receives the same value. Therefore the equation is  $x = 0$  the solution has. Answer: A).

**2-Example.** This  $2 \cos x = 2^x + 2^{-x}$  equation has multiple roots [9-23].

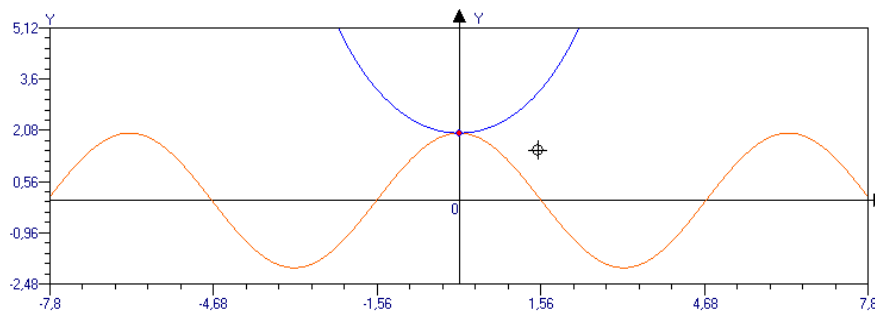
A) 1 B) 3 C)  $\infty$  D)  $\emptyset$ .

Charging: I method: Theorem to according,  $f(x) = 2 \cos x$ ,  $g(x) = 2^x + 2^{-x}$  in. Also

$$\begin{aligned} \begin{cases} -2 \leq f(x) \leq 2 \\ g(x) \geq 2 \end{cases} &\Rightarrow [f(x) = g(x)] \Rightarrow \begin{cases} f(x) = 2 \\ g(x) = 2 \end{cases} \Rightarrow \begin{cases} 2 \cos x = 2 \\ 2^x + 2^{-x} = 2 \end{cases} \\ &\Rightarrow \begin{cases} \cos x = 1 \\ 2^{2x} + 1 = 2^{x+1} \end{cases} \Rightarrow \begin{cases} x = 2 \text{ is easily mobile application, } k \in \mathbb{Z} \\ x = 0 \end{cases} \\ &\Rightarrow \begin{cases} x = 0, k = 0 \\ x = 0 \end{cases} \end{aligned}$$

$x = 0$  is one solution.

II method: Given  $2 \cos x = 2^x + 2^{-x}$  equation on the tab we can define two functions:  $y_1 = 2 \cos x$ ,  $y_2 = 2^x + 2^{-x}$ . This function is the graph of one of the coordinates system we drawn (2-graph).



2-graph.  $y_1 = 2 \cos x, y_2 = 2^x + 2^{-x}$ .

Two-from the graph that arisen as the name suggests,  $y_1$  and  $y_2$  of the function, one common point have. Answer: A).

**3. Example.** This  $2|x - 3| + x - 1 + 2$  with  $\frac{nx}{2} = 0$  equation has multiple roots.

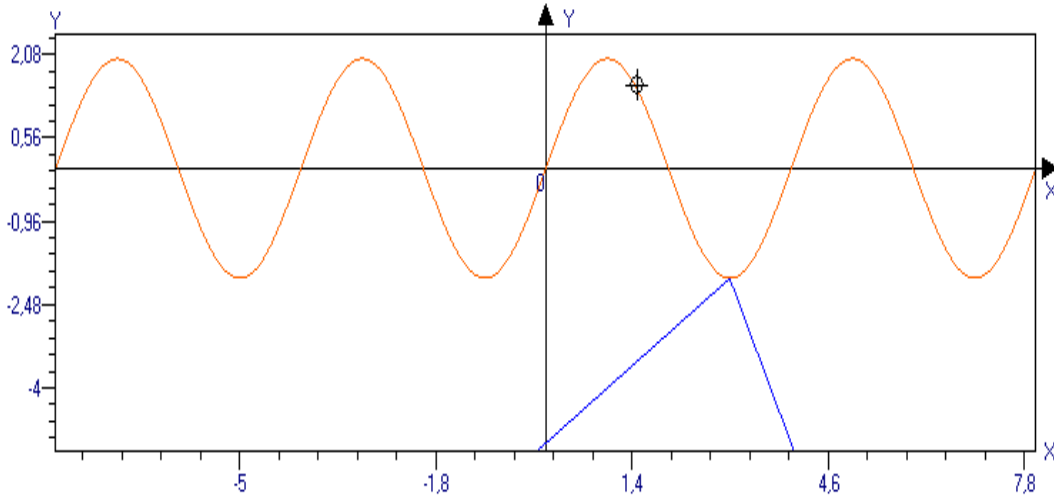
A) 1 B) 2 C)  $\emptyset$  D) 3.



Solve: the equation 2 units to function form, define, we can:

$$y_1 = 1 - x - 2|x - 3|, y_2 = 2 \text{ with } \frac{nx}{2}$$

and this function, the graph we plot (3-graph).



3-graph.  $y_1 = 1 - x - 2|x - 3|, y_2 = 2 \text{ with } \frac{nx}{2}$ .

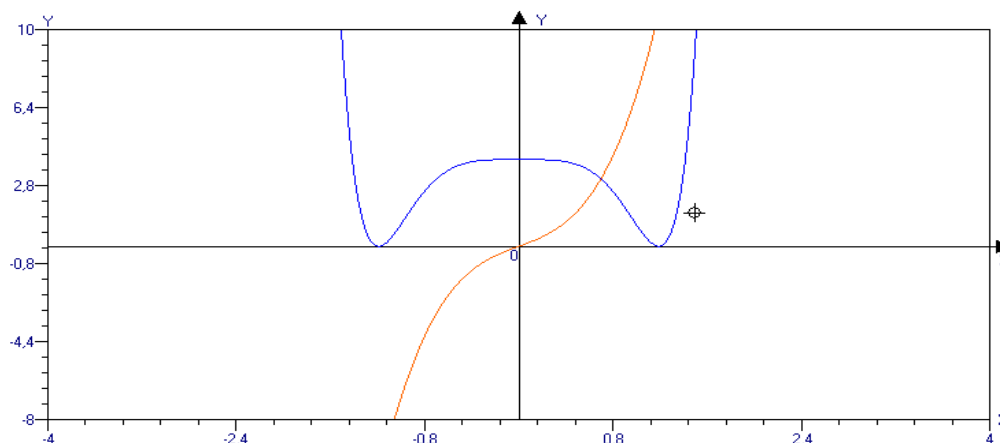
Three-from the graph that arisen as the name suggests,  $y_1$  and  $y_2$ , the function of only one common point have. Issue terms according to the root is, the root of the few was asked.

Answer: A).

**4. Example.**  $2x + 5x^3 = x^8 - 4x^4 + 4$  Multiple negative solution to have?

A) 0 B) 2 C) 1 D) 4.

Solve: the equation of the right side of  $f(x) = x^8 - 4x^4 + 4$  that is, the left side of  $g(x) = 2x + 5x^3$  the understanding of the character and of the graph of this function is a single in the coordinate system we drawn (4-graph).



4-graph.  $f(x) = 2x + 5x^3$   $g(x) = x^8 - 4x^4 + 4$ .

$f(x)$  – pair function  $g(x)$  – is an odd function. If the equations of negative solutions able to be, II and IV the intersection of need. Four-from the graph that arisen as the name suggests,  $f(x)$  and  $g(x)$  is the negative of the function there is no solution [20-35].

Answer: A).

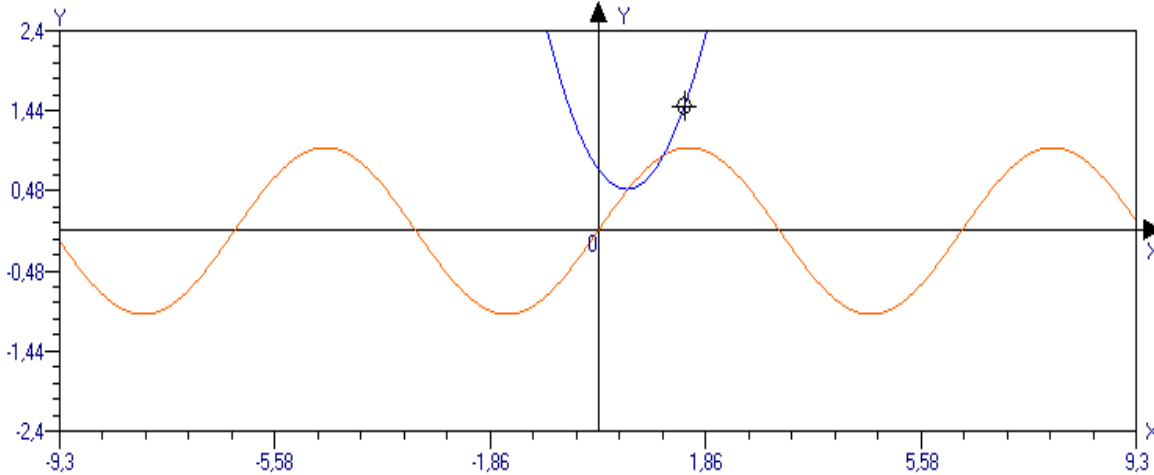
**5-Example.** This with  $x = x^2 - x + 0,75$  equation the roots of which age-related to the incision?

A)  $[0; \pi]$  B)  $\left[\frac{3\pi}{2}; 2\pi\right]$  C)  $[-\pi; 0]$  D)  $x = \emptyset$ .

Solve: the equation 2 units to function, we will allocate:

$$y_1 = \text{with } x, y_2 = x^2 - x + 0,75$$

This function is the graph of one of the coordinates system we drawn (5-graph).



5-graph.  $y_1 = \sin x$ ,  $y_2 = x^2 - x + 0,75$ .

Five-from the graph that arisen as the name suggests, the solution  $in[0; \pi]$  belongs to the incision.

Answer: A).

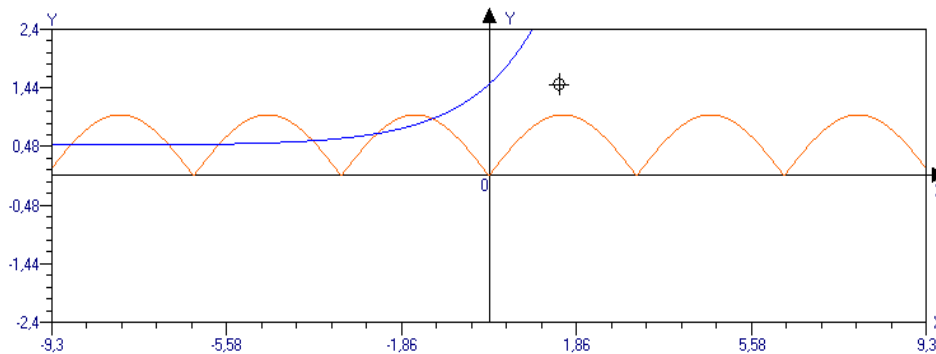
**6-Example.** This  $2^x + 0,5 = |x|$  negative multiple of the solution of the equation?

A) Unlimited many B)  $\emptyset$  C) 14 D) 1.

Solve: the equation 2 units function tab, define, we can:

$$y_1 = 2^x + 0.5, y_2 = |x|$$

and this function is the graph of one of the coordinates system we drawn (6-graph).



6-graph.  $y_1 = 2^x + 0.5$ ,  $y_2 = |x|$ .



6-from the graph that are seen as the name suggests,  $y_1$  and  $y_2$  unlimited a lot of negative solutions of the function.

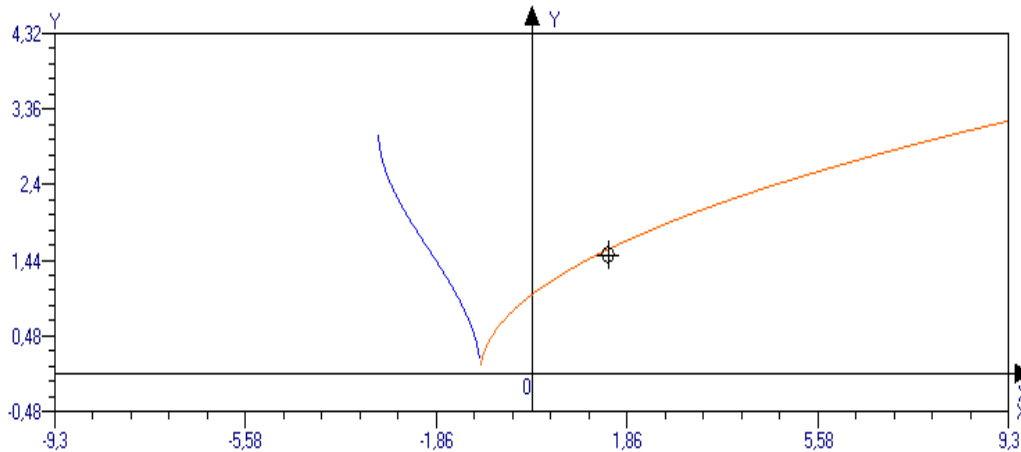
Answer: A).

**7--Example.** The disparity of most large entire solution find:

$$\sqrt{1+x} \leq \arccos(x+2)$$

A) -1 B) 0 C) -2 D) 1.

Charging: Inequality right side  $y_1 = \arccos(x+2)$ , left side  $y_2 = \sqrt{1+x}$  appreciate that character. This function graph drawing we (7-graph).



7-graph.  $y_1 = \arccos(x+2), y_2 = \sqrt{1+x}$ .

Seven-from the graph, as it is known, the disparity of the whole solution to have and it is  $x = -1$  is equal to. Answer: A).

**8-Example.**  $\int_0^1 \arccos x \, dx = ?$  Calculation.

Of charging. I method: This integral calculation for the many pieces of the integrated method we will use.

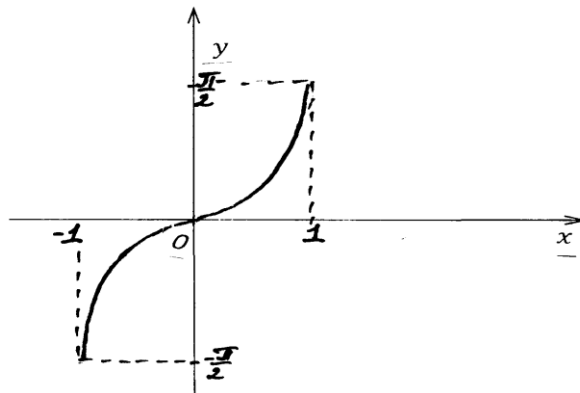
$$\int_0^1 \arccos x \, dx = \left. \begin{array}{l} u = \arccos x \\ du = \frac{-dx}{\sqrt{1-x^2}} \\ v = x \end{array} \right| = (x * \arccos x) \Big|_0^1 - \int_0^1 \frac{-x}{\sqrt{1-x^2}} dx = \frac{\pi}{2} + \frac{1}{2} \int_0^1 \frac{d(1-x^2)}{\sqrt{1-x^2}} =$$

$$\frac{\pi}{2} + \sqrt{1-x^2} \Big|_0^1 = \frac{\pi}{2} + 1.$$



Response:  $\int_0^1 \arcsin x \, dx = \frac{\pi}{2} + 1.$

II methods: This integrated graphics in the method as follows, redefined.  $y = \arcsin x$  the function schedule we made (8-graph).



8-graph.  $y = \arcsin x.$

8-from the graph, the following equality seats:

$$\int_0^1 \arcsin x \, dx = 1 * \frac{\pi}{2} - \int_0^1 \cos y \, dy = \frac{\pi}{2} + \cos y \Big|_0^1 = \frac{\pi}{2} + 1.$$

Such integrated calculation of many pieces of the integrated method than, the function from graphic using solve, comfortable and solution short term to find help will.

Response:  $\int_0^1 \arcsin x \, dx = \frac{\pi}{2} + 1.$

### References

1. Abduhamidov A.U., Nasimov H.A., Nosirov U.M., Husanov J.H. "Algebra va matematik analiz asoslari I, II qism. O'qituvchi nashriyot manbaa ijodiy uyi. Toshkent. 2008. 98-134-betlar.
2. Толипов А. Элементар функциялар. – Т.: Ўқитувчи, 1992. 80–122 бетлар.
3. Gaziyeв A., Israilov I., Yaxshiboyev M. Funktsiyalar va grafiklar. Toshkent.2006. 13-280 betlar.
4. Сахаев М. Мактабда функция ва графикларни урганиш. – Т.: Ўқитувчи, 1967. 398-430-ст.





5. Saxaev M. The study of the function and in school graphics. – T.: O'qituvchi, 1967. 398-430-st.
6. Eylar integrallarining tadbirlari. Uzbekistan [www.scientificprogress.uz](http://www.scientificprogress.uz) scientific progress volume 2 | ISSUE 1 | 2021 ISSN: 2181-1601. 10
7. Avezov A.X. Ta'limning turli bosqichlarida innovatsion texnologiyalardan foydalanish samaradorligini oshirish. // "Science and Education" scientific journal, 2:11 (2021), c. 789-797.
8. Avezov A.X. Oliy matematika fanini o'qitishda tabaqalash texnologiyasidan foydalanish imkoniyatlari // "Science and Education" scientific journal, 2:11 (2021), c. 778-788.
9. Avezov A.X. Umumta'lim maktablardagi matematika darslarida axborot texnologiyalarini rivojlantirish tamoyillari // "Science and Education" scientific journal 2:11 (2021), c. 749-758
10. Avezov A.X. Matematika o'qitishning tatbiqiy metodlari // Pedagogik mahorat, 2021, Maxsus son. c. 52-57.
11. Avezov A.X. Avtonom differensial tenglamalarning qo'zg'almas nuqtalari tasnifi haqida // Science and Education, 2:11(2021), c.101-113.
12. Avezov A.X. Matematika fanini o'qitishning asosiy metodlari // Pedagogik mahorat, 2021, Maxsus son. c. 47-52
13. Avezov A.X., Rakhmatova N. Eylar integrallarining tadbirlari. // Scientific progress, 2:1 (2021), 1397-1406 b.
14. Аvezов А.Х., С.Хожиев, Ш.Н.Муродов // Численные исследования трехмерных турбулентных струй реагирующих газов, вытекающих из сопла прямоугольной формы, на основе « $\kappa - \varepsilon$ » модели турбулентности. // Бухоро Давлат университети «Илмий ахбороти» -2007.№3.с.81-87.
15. Avezov A.X. Gramm determinanti haqida ba'zi bir mulohazalar. // "Science and Education" scientific journal, 2:12 (2021), c. 11-22.



16. Avezov A.X. Sferik funksiyalarning amaliy ahamiyati haqida. // Science and Education" scientific journal, 2:12 (2021), с. 23-34.
17. Avezov A.X. О тригонометрических рядах Фурье. // Science and Education" scientific journal, 2:12 (2021), с. 35-49.
18. Avezov A.X. Funksiyaning to'la o'zgarishini hisoblashga doir misollar yechish yo'llari // Science and Education, 2:12(2021), с.50-61.
19. Avezov A.X. "Kompleks sonlar" mavzusini o'qitishda "Bumerang" texnologiyasi. // Science and Education" scientific journal, 2:12 (2021), с. 430-440.
20. Avezov A.X. Funksiya hosilasi mavzusini o'qitishda "Kichik guruhlarda ishlash" metodi.//Science and Education, 2:12(2021),с.441-450.
21. Avezov A.X. Interfaol usullarni qo'llab funksiyaning differensial va uning taqribiy hisoblashga doir misollar yechish. // Science and Education" scientific journal, 2:12 (2021), с. 451-461.
22. Avezov A.X. Matematikani o'qitishda interfaol metodlar: "Keys-stadi" metodi. // Science and Education" scientific journal, 2:12 (2021), с. 462-470.
23. Barcha yo'nalishdagi birinchi kurs talabalari uchun "Matematik analiz" fanidan elektron o'quv qo'llanma. № DGU 14132. 12.01.2022 y.
24. Avezov Alijon Xayrulloevich, Nuriddinova Nigina Zamon qizi. Chizg'ich va sirkul yordamida geometrik masalalarni yechishni o'rganish bo'yicha metodik tavsiyalar. "Pedagogik akmeologiya" xalqaro ilmiy-metodik jurnali maxsus son, 2022. 161-168 bet.
25. Avezov Alijon Xayrulloevich. Oliy matematika fanini o'qitishdagi innovatsiyalar va ilg'or xorijiy tajribalar. "Pedagogik akmeologiya" xalqaro ilmiy-metodik jurnali maxsus son, 2022. 185-193 bet.
26. Alijon Xayrulloevich Avezov, Nigina Zamon qizi Nuriddinova Kompleks sonlar tekisligidagi muhim integrallar haqida. Science and education scientific journal ISSN 2181-0842 volume 3, ISSUE 10 october 2022. 10-24 bet.



27. Alijon Xayrulloevich Avezov, Shahzodabonu Voxid qizi Toshpo'latova Funksionallar va ularning ekstremumlari haqida. Gamilton -Yakobi tenglamasi. Science and education scientific journal ISSN 2181-0842 volume 4, ISSUE 3 march 2023.11-26 bet.
28. Matematik analiz fanidan mustaqil ishlar (elektron qo'llanma). № DGU 23574. 23.03.2023.
29. Influence of nozzle geometry on torch parameters during gas combustion. E3S Web of Conferences 401, 01061 (2023) (Scopus). <https://doi.org/10.1051/e3sconf/202340101061>
30. Matematika fanini o'qitishda noan'anaviy ta'lim yondashuvlari. Pedagogik mahorat Ilmiy-nazariy va metodik jurnal 11-son (2023-yil, dekabr), 34-43bet
31. Rasulov, H. (2021). One dynamic system with continuous time. Центр научных публикаций (buxdu.Uz), 5(5).
32. Rasulov, X. (2022). Об одной динамической системе с непрерывным временем. Центр научных публикаций (buxdu.Uz), 22(22).
33. Rasulov, R. X. R. (2022). Buzilish chizig'iga ega kvazichizikli elliptik tenglama uchun Dirixle-Neyman masalasi. Центр научных публикаций (buxdu.Uz), 18(18).
34. Rasulov, R. X. R. (2022). Иккита перпендикуляр бузилиш чизиғига эга бўлган аралаш типдаги тенглама учун чегаравий масала ҳақида. Центр научных публикаций (buxdu.Uz), 22(22).
35. Rasulov, R. X. R. (2022). Бузилиш чизиғига эга бўлган квазичизикли аралаш типдаги тенглама учун Трикоми масаласига ўхшаш чегаравий масала ҳақида. Центр научных публикаций (buxdu.Uz), 18(18).